

# Welcome

## Crime Prevention Through Sport Fund Information Session

Jane Knowles (SASP) and Ruth Glanvill (Wesport)



## Funding Overview

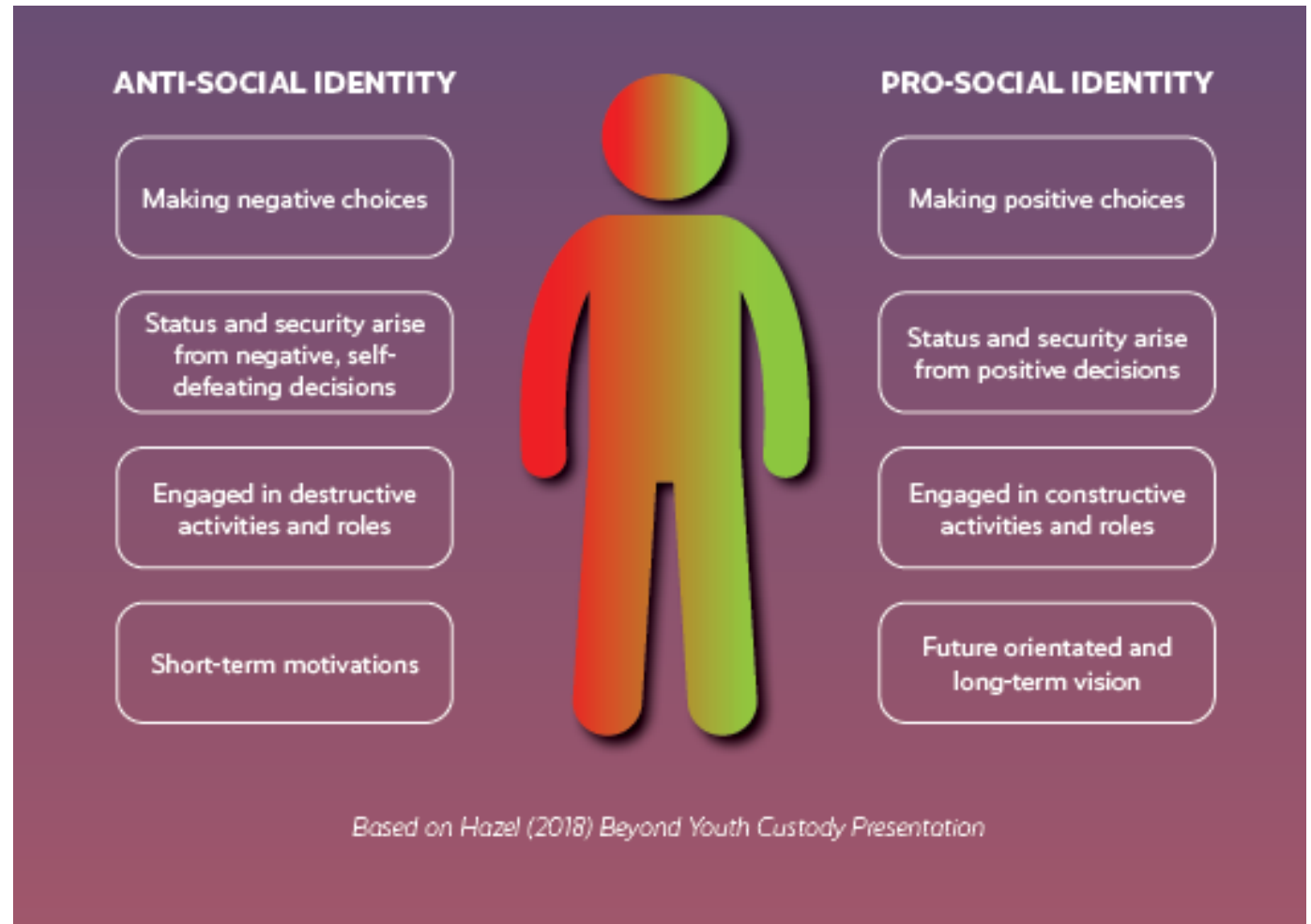
£50,000 made available through the Avon and Somerset Constabulary

Requested SASP and Wesport help distribute this funding to

- Add additional value
- Support applicants sustain projects
- Provide information on different funding streams where appropriate
- Connect the Violence Reduction Units to community provision



# How can sport contribute to enhancing positive outcomes for young people?



# What do we wish to achieve with the funding?

- **Preventing and reducing violence, crime and anti social behaviour**
- Building resilience and skills of young people through teamwork, commitment and interest
- Providing positive places for young people to engage and develop positive longer term relationships with other participants and adults
- Supporting the sports community to provide additional support for targeted young people
- Provide a more positive engagement with the police and other agencies where applicable.



## 5 key ingredients

### 1. Right staff

What experience do you have? Do you have more than theory to offer?

### 2. Right young people

What is your present reach to our potential target audience? Who do you work with to help your reach?



Building on young people's strengths and developing a young person's pro-social identity

## TABLE 1: IDENTIFYING THE APPROPRIATE SPORTS PROGRAMME(S) FOR YOUNG PEOPLE

(adapted from Stephenson et al., 2011)

<b>PRIMARY</b> Prevention	<b>SECONDARY</b> Early Intervention	<b>TERTIARY</b> Offending/Reoffending
<b>PROGRAMME APPROACH</b> <ul style="list-style-type: none"> <li>• Universal/Open Access</li> <li>• Neighbourhood/ community level</li> <li>• Developmental provision to improve overall life opportunities</li> </ul>	<b>PROGRAMME APPROACH</b> <ul style="list-style-type: none"> <li>• Targeted at those considered at risk of involvement in youth offending</li> <li>• Can be an individual/ family approach and/or targeted at geographical 'hot spot' areas</li> </ul>	<b>PROGRAMME APPROACH</b> <ul style="list-style-type: none"> <li>• Targeted intervention for those already involved in offending behaviour ranging from less serious to more serious offending</li> <li>• Can also support rehabilitation programmes</li> </ul>



## RIGHT YOUNG PEOPLE

PRIMARY INTERVENTION	SECONDARY INTERVENTION	TERTIARY INTERVENTION
<ul style="list-style-type: none"> <li>• All young people in a local community with a focus on areas of deprivation.</li> <li>• Inclusive and reflecting the diversity of the local community</li> <li>• Including young people in sports sessions who can act as pro-social peer role models for values, attitudes and behaviour.</li> </ul>	<ul style="list-style-type: none"> <li>• Young people experiencing challenging circumstances and with additional vulnerabilities.</li> <li>• Working with young people who are victims, perpetrators or both.</li> <li>• Young people who have been formally or informally referred by agencies, who have been signposted to the sessions or who are self-referred.</li> <li>• Including young people in group sport sessions as pro-social peer role models with shared lived experience.</li> <li>• If group sessions, provide additional structure to support a pro-social approach and to avoid the potential for 'deviancy' training or the recruitment to gangs.</li> </ul>	<ul style="list-style-type: none"> <li>• Complex and vulnerable young people with challenging circumstances already directly involved in offending behaviour.</li> <li>• Greater reliance on formal referrals by youth justice and criminal justice partners</li> <li>• For small group work, plan the selection of young people on information from local agencies to create the right mix, to protect young people and to avoid deviancy training.</li> </ul>

Theory of Change, Street Games 2021

## 5 key ingredients cont.....

### 3. Right style and place

Do you provide the right environment for young people to thrive? Safe, familiar, local, accessible. Focus on personal achievement and growth not always winning.

### 4. Rewarding activities

How might you retain and sustaining positive involvement in sport?

### 5. Attractive offer

What does this look like for different ages, genders?  
How will you find out?





# Criteria, Guidance & Applications

- Application content
- Eligibility
- Budget
- Theory of Change resource

Applicant Initial	Statement of Funding Conditions
	Avon & Somerset Constabulary do not need to declare individual awards made to any organisation but are subject to Freedom of Information Act (FOIA).
	Data Protection Guidelines Applications will be shared amongst fund panel partners including Avon & Somerset Constabulary, Office for Police and Crime Commissioner, Somerset Active Sport Partnership & Wesport. For the purpose of this funding arrangement the Crime Prevention through Sport group will be using the Wesport Privacy Notice, <a href="#">for further detail please click here.</a>
	Applications will be reviewed using the guidance and criteria sections of this application document. If your application is unsuccessful you will be able to request feedback from the panel meeting.
	Successful applicants will be requested to sign a Partner Agreement to confirm the funding arrangements. Wesport will require an invoice from your organisation in order to pay any agreed funding amount.
	Please confirm there will be a willingness for you and others in your organisations to take part in free virtual training related to young people at risk.
<b>Applicant Initial</b>	<b>Essential Supporting Information</b> <i>Please send all the requested documentation below in order for your application to be considered</i>
	Copy of Club / Organisational constitution or Articles
	Copy of Safeguarding policy
	Copy of most recent set of annual accounts and or recent bank statement



## Areas of Delivery – Avon

### Bristol

- North – Henbury; Lawrence Weston; Lockleaze
- East – Fishponds; St Pauls; Easton
- South – Hartcliffe; Knowle West

### B&NES

- Keynsham; Bath City Centre; Whiteway & Twerton; Midsomer Norton; Paulton

### North Somerset

- Weston-Super-Mare

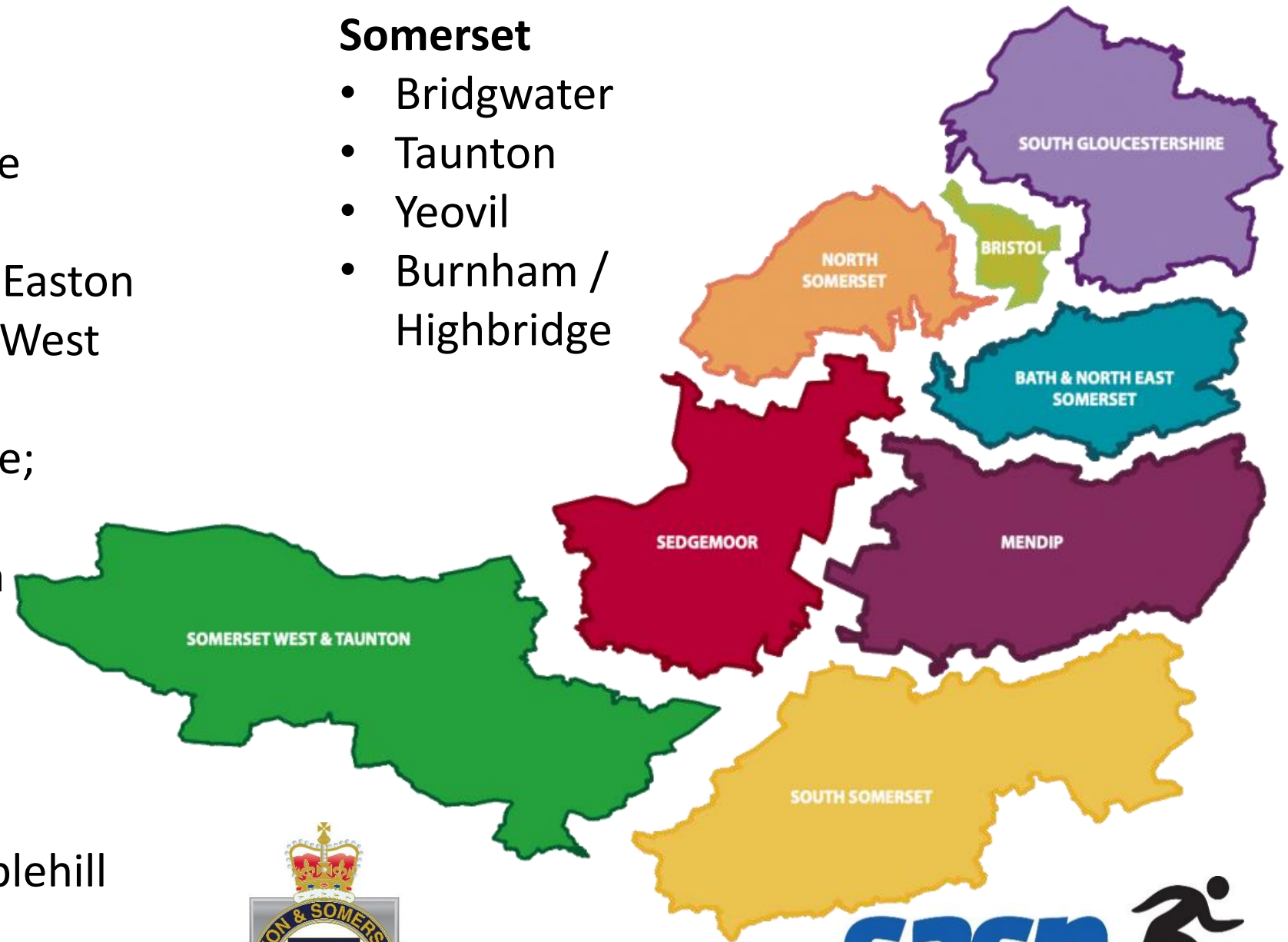
### South Gloucestershire

- Cadbury Heath; Yate; Patchway; Kingswood; Staplehill



## Somerset

- Bridgwater
- Taunton
- Yeovil
- Burnham / Highbridge



# Time frame for applications

Phase 1 Deadline  
Monday 17<sup>th</sup> May



Panel meeting w/c  
31<sup>st</sup> May



Awards  
communicated w/c  
7th June

- ✓ Assessment checks complete
- ✓ Supporting documents submitted

- ✓ Projects assessed alongside criteria and guidance
- ✓ Feedback tracked for applications

- ✓ Partner Agreement signed
- ✓ Invoice received and processed

# What next?

For a further discussion please contact:

SASP: Laura Dyke on [ldyke@sasp.co.uk](mailto:ldyke@sasp.co.uk) or Jane Knowles on [jknowles@sasp.co.uk](mailto:jknowles@sasp.co.uk)

Wesport: Ruth Glanvill on [ruth.glanvill@wesport.org.uk](mailto:ruth.glanvill@wesport.org.uk)

